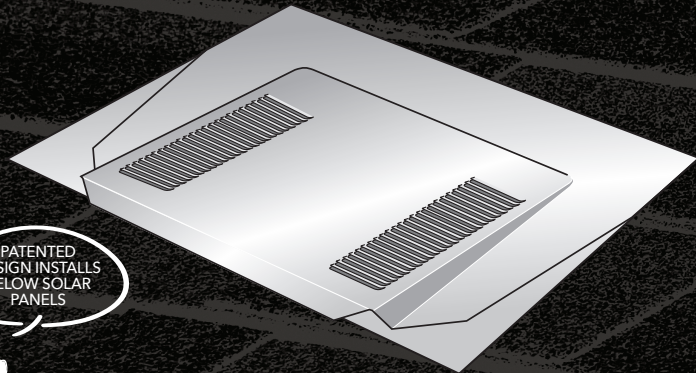


## LOW PROFILE (TAPERED) ATTIC VENTS

For all types of Shingle, Shake and Slate Roofs



UPGRADES?



O'Hagin vents are manufactured and protected under one or more of the following patents (other U.S. and foreign patents are pending): D456,531; D457,234; D458,391; D458,392; D469,889; D479,885; D504,172; D512,774; D549,316; 6,050,039; 6,129,628; 6,354,051; 6,390,914; 6,447,390; 6,491,579; 9,011,221

### NET FREE VENTILATION AREA

1/4" Wire Mesh	72.00 sq. in.
1/8" Wire Mesh	64.80 sq. in.

Figures based on independent evaluation reports.

### FEATURES

- 26 Gauge G90 Galvanized Steel
- 20 Year Warranty
- 1/4" Noncombustible, Corrosion-Resistant Wire Mesh
- 4" Flange

### METAL UPGRADE OPTIONS

- .032" Aluminum, 50 Year Warranty
- 16 oz. Copper, 50 Year Warranty

### FINISH UPGRADE OPTIONS

Pre-Painted Galvanized Steel/Aluminum Finishes



### CLIMATE-RESISTANT UPGRADE OPTIONS

Stainless Steel or 1/8" Noncombustible, Corrosion-Resistant Wire Mesh

Patented Stainless Steel Fine/Flexible Wire Filament

High Wind Diverter

Integrated High Wind Diverter (Standard in Florida)

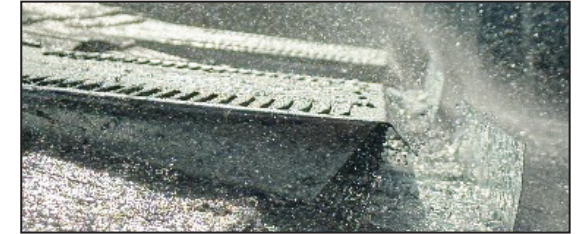
Z-Baffles (Snow Load)

Recommended in areas where Ice Barriers are required (IRC 905.1.2).

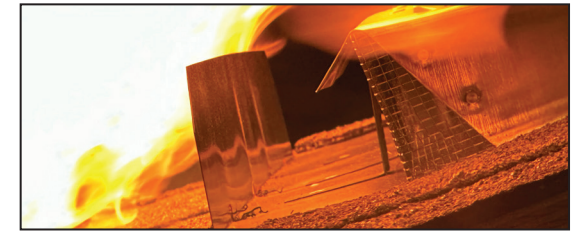


## CLIMATE-RESISTANT ATTIC VENTS

FLAME • EMBER • SNOW • RAIN



**TESTED** to 140 mph wind-driven rain (category 4 hurricane).  
**PASSED:** Wind-driven rain tested for 75 feet—five plus stories.



**TESTED** to meet the specific requirements of Chapter 7A of the California Building Code for flame and ember exposure.  
**PASSED:** NO cotton ignition.



Brands and Trademarks may vary by region.

### LOCAL AND NATIONAL APPROVALS

O'Hagin is a recognized leader in attic ventilation testing and design.



For additional info visit [ohagin.com](http://ohagin.com)

### RECOGNITION



This product is qualified for use as a component of a FORTIFIED™, eligible and Wildfire Prepared Home™, eligible roof system. Use of this product does not guarantee a FORTIFIED™ and/or Wildfire Prepared Home™ designation. To be eligible for a FORTIFIED™ designation, a complete roofing system (components and accessories) must meet the requirements detailed in the FORTIFIED™ and be installed by a certified FORTIFIED™ Roofing Contractor. WILDFIRE PREPARED Home™ designation requires the entire structure—including all components and accessories—Wildfire Prepared Home™ Standard Wildfire Prepared Home™ Standard Products that are required to meet the standard include but may not be limited to: roof coverings, attic ventilation components, a qualified sealed roof deck system, roof underlayment, edge metal and appropriate fasteners for all mechanically fastened components. Documentation for all products and their installation is required. Additional requirements, eligibility criteria and restrictions apply. See the current FORTIFIED™ standard at <https://fortifiedhome.org/technical-documents/> and the current Wildfire Prepared Home™ standard at <https://wildfireprepared.org> for details.